



higher education  
& training

Department:  
Higher Education and Training  
REPUBLIC OF SOUTH AFRICA



# Limpopo CET College Prospectus



## Vision, Mission and Values

### VISION STATEMENT

A preferred college that provides responsive and innovative programmes.

### MISSION STATEMENT

To offer relevant skills through responsive formal and non-formal programmes for the Upliftment of the communities.

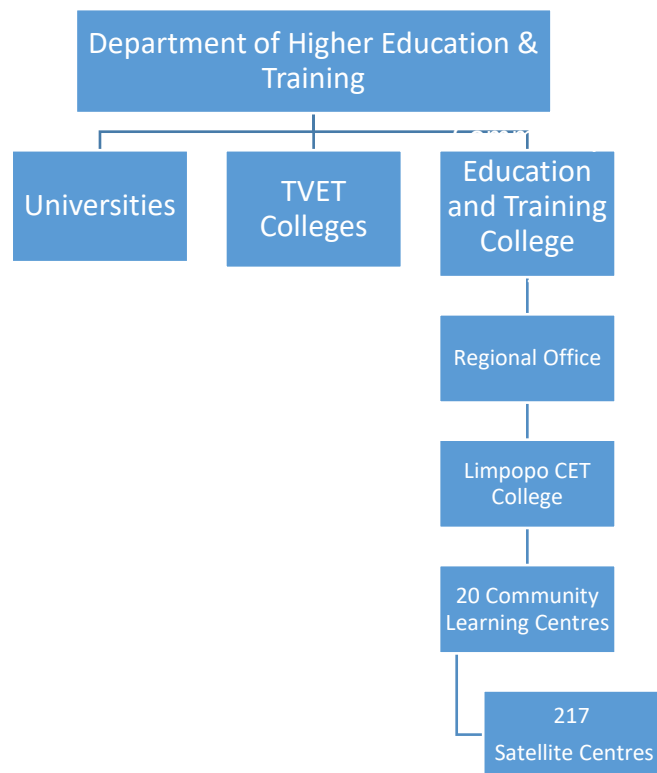
### OUR CORE VALUES

- Integrity: uphold ethical practices
- Professionalism: sustain responsibility and accountability in all our endeavours
- Dedication: committed to serve
- Excellence: maintain high standards
- Respect: champion human dignity

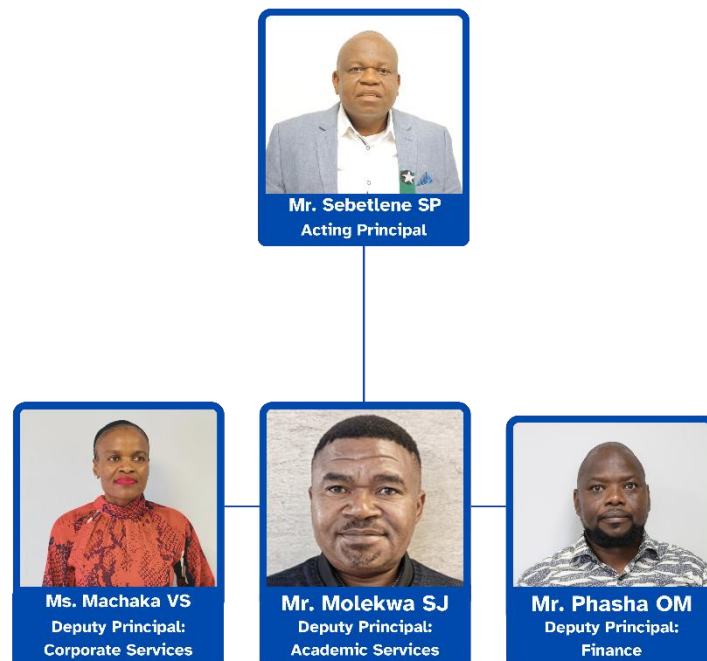
# Contents

1.	DHET STRUCTURE.....	4
2.	COLLEGE STRUCTURE.....	5
3.	College Contact Details.....	6
4.	COLLEGE PROFILE .....	7
7.	Selection of Learning Areas Guide.....	10
8.	Grade 12 Programmes.....	11
9.	SKILLS PROGRAMMES: .....	12
10.	Frequently Asked Questions:.....	13
11.	Main Centres and Satellites .....	15

## 1. DHET STRUCTURE



## 2. COLLEGE STRUCTURE



### 3. College Contact Details

Contact Details	
<b>Reception</b>	
Telephone	015 753 0000
Email	info@LP.CETC.edu.za
<b>Principal's Office</b>	
Telephone	015 753 002/0004
Email	<b>College Principal</b>
	Principal's PA- PA@LP.CETC.edu.za
	Shingange.s@dhet.gov.za
<b>Academic Services</b>	
Telephone	015 753 3001/3005
Email	<b>Molekwa.SJ@dhet.gov.za</b>
	Shibisi.n@dhet.gov.za
<b>Corporate Services</b>	
Telephone	015 753 3008/3009
Email	<b>Machaka .V@dhet.gov.za</b>
	Kgasi.L@dhet.gov.za
<b>Finance</b>	
Telephone	015 753 3011/3013/3014/3016/3017
Email	<b>OPhasha@LP.CETC.edu.za</b>

## 4. COLLEGE PROFILE

The Limpopo Community Education and Training College (CET) – previously known as ABET, aims to address the education needs of youth and adults in Limpopo communities who, for various reasons, did not complete their schooling or never attended school. The College seeks to facilitate a cycle of lifelong learning in communities by establishing the development of skills (including literacy, numeracy and vocational skills) to enhance personal, social, family and employment experiences. It offers both academic and skills programmes.

The College's Central Office is located at:

JCJ Building,  
2 Biccard Street and Suid Street  
Polokwane

Additionally, the College has 20 Community Learning Centres (CLCs) spread across the five district in Limpopo within the different municipalities in Limpopo

NO	DISTRICTS with local municipalities	MAIN CENTRE	SATELLITE CLCs
1	<b>Vhembe District</b> - Thulamela Municipality, Collins Chabane Municipality, Makhado Municipality and Musina Municipality	5	60
2	<b>Capricorn District</b> - Polokwane Municipality, Mole-Mole Municipality, Blouberg Municipality and Lepelle-Nkupi	4	36
3	<b>Greater Sekhukhune District</b> – Fetakgomo-Tubatse Municipality, Elias Motswaledi Municipality and Makhuduthamaga Municipality	4	47
4	<b>Mopani District</b> – Greater Tzaneen Municipality, Maruleng Municipality, Greater Giyani Municipality, Greater Letaba Municipality and Ba-Phalaborwa Municipality	4	50
5	<b>Waterberg District</b> – Mogalakwena Municipality, Bela-Bela Municipality, Modimolle-Mookgopong and Lephalale Municipality	3	24
<b>Total</b>		20	217

A further 217 learning site (satellites), which are attached to the main Centres, provide easier access for students within their communities, therefore contributing to local development, building social agency and social cohesion.

Limpopo CET College is your best choice in academic and skills development.

## 5. LIMPOPO MAP



Vhembe	
Waterberg	
Capricorn	
Mopani	
Sekhukhune	



## 6. Academic & Skills Programmes

### Post-Literacy Programmes

The Limpopo CET College's Post-Literacy programmes are ideal for students who have dropped out of school or never had an opportunity for formal education.

These include Basic Adult Education courses for sub levels 1-3:

- AET LEVEL 1: Offers Numeracy and Languages (mother tongue and English, depending on the needs of students);
- AET LEVEL 2: Offers Numeracy and Languages and an option of Intergrated Studies or a Skills Programme; and
- AET LEVEL 3: Offers Numeracy and Languages, Intergrated Studies or a Skills Programme.

AET LEVEL 1-3 Programmes mainly consists of Numeracy and Literacy subjects which may extend over a period of three years depending on the background of the students.

These programmes are designed as preparatory steps which aim at preparing students to start and continue with their education.

### Academic Qualifications

The following Academic Qualifications are offered:

General Education and Training Certificate (GETC);

#### GETC-ABET Level 4 Qualification

The GETC-ABET qualification (NQF Level 1), with ID No. 71751, provides adult students with fundamental basics in general education. The purpose of this qualification is to equip students with knowledge, skills and values in specific learning areas which enable them to further their academic studies or occupational qualifications. It allows students to choose elective unit standards, which relate to occupational learning relevant to their area of interest or specialisation. The qualification comprises:

- Fundamentals (Compulsary Learning Areas)
- Core (Learning Areas required to complete a course)
- Elective Component (Stanadard that allows a student to choose and specialise in certain Areas)

To acquire a GETC-ABET qualification, students need to obtain a minimum of 120 credits at ABET Level 4. An achievement of 120 credits should be obtained from learning areas in the Fundamentals, Core and Elective categories according to the rules of combination below.

*Rules of Combination for the GETC-ABET Qualification: 120 Credits*

Fundamentals Component: Compulsory 39 Credits

- One Official Language: 23 Credits
- Mathematical Literacy: 16 Credits OR
- Mathematics and Mathematical Sciences: 16 credits NOT BOTH

Core Component: Compulsory 32 Credits

Core Component means a Learning Area required for completion of a course, major or specialisation.

- Life Orientation: 32 Credits

Electives Component: Optional	
Academic Learning Areas	
Learning Area	Credit
Human and Social Sciences	23
Natural Sciences	15
Economic & Management Sciences	21
Arts & Culture	17
Technology	11
One additional Official Language (Excluding the language chosen as a Fundamental)	23
Vocational Learning Areas	
Applied Agriculture & Agricultural Technology	20
Ancillary Health Care	45
Small, Medium and Macro Enterprises	17
Travel and Tourism	38
Information Communication Technology	33
Early Childhood Development	26
Wholesale and Retail	37

## 7. Selection of Learning Areas Guide

To complete the qualification, the learner must choose from the following options:

Option 1: 5 Learning Areas	Option 2: 6 Learning Areas	Option 3: 7 or more Learning Areas
TWO Fundamentals, ONE Core and Electives	TWO Fundamentals, ONE Core and THREE Electives	TWO fundamentals, ONE Core and FOUR Electives

Grade 12 Programmes	
Entry requirements for South Africa	
ASC- Amended Senior Certificate	NSC – National Senior Certificate
<ul style="list-style-type: none"> <li>• Person must be 21 years or older</li> <li>• Certified copy of ID</li> <li>• Certified copy of previous results/ School report (Passed GETC – NQF1)</li> <li>• Persons with an incomplete National Senior Certificate and whose School Based Assessment (SBA) validity has expired.</li> <li>• Only in exceptional cases, out of school youth, who are 18-21 years old and who could not complete their schooling due to circumstance beyond their control.</li> <li>• For those who do not meet the requirements for ASC and you are</li> </ul>	<ul style="list-style-type: none"> <li>• Certified ID Copy</li> <li>• Certified Statement of Results</li> <li>• Last school leaving report</li> <li>• Proof of Residence</li> </ul>

above 21, will be required to write a Placement Assessment Test.	
<b>Entry requirements for non-South Africans</b>	
<ul style="list-style-type: none"> <li>• Proof of Identification (Passport or Asylum)</li> <li>• Copy of previous results or highest qualification (endorsed by the South African Qualifications Authority)</li> <li>• Any formal school within South Africa</li> </ul>	
<b>NB:</b> Prospective students without reports will be required to write a Placement Tool Test	

## 8. Grade 12 Programmes

- Senior Certificates (Amended)
- National Senior Certificate (Rewrites)

Each candidate must register for at least six subjects to qualify for a Senior Certificate (ASC).

Students have an opportunity to upgrade or rewrite NSC subjects.

Students who have passed some Senior Certificate subjects. But who do not comply with the six subjects limit must select the remaining number of subjects from the following list:

<b>OFFICIAL LANGUAGES AT HOME &amp; FIRST ADDITIONAL LANGUAGE</b>
<b>LEARNING AREA</b>
Afrikaans Home Language
Afrikaans First Additional Language
English Home Language
English First Additional Language
IsiNdebele Home Language
IsiNdebele First Additional Language
IsiZulu Home Language
IsiZulu First Additional Language
IsiXhosa Home Language
IsiXhosa First Additional Language
Sepedi Home Language
Sepedi First Additional Language
Sesotho Home Language
Sesotho First Additional Language
Siswati Home Language
Siswati First Additional Language
Setswana Home Language
Setswana First Additional Language
Tshivenda Home Language
Tshivenda First Additional Language
Xitsonga Home Language
Xitsonga First Additional Language
<b>AGRICULTURE</b>
Agricultural Sciences
<b>BUSINESS, COMMERCE AND MANAGEMENT STUDIES</b>
Accounting
Business Studies
Economics

<b>HUMAN AND SOCIAL STUDIES</b>
Geography
History
Religion Studies
<b>PHYSICAL, MATHEMATICAL, COMPUTER AND LIFE SCIENCES</b>
Computer Applications Technology
Information Technology
Life Sciences
Mathematical Literacy
Mathematics
Physical Sciences

These qualifications enable students to access a variety of post-school opportunities depending on their performance since these certificates are nationally recognised and internationally comparable.

The opportunities include entry-level employment, admission to learnership and internships, admission to colleges, universities, and other higher education institutions.

## 9. SKILLS PROGRAMMES:

FORMAL PROGRAMMES		
Programmes	Duration	Accredited/non-accredited
Hair dressing	3 Months	Accredited
Clothing Manufacturing Process	3 Months	Accredited
New Venture Creations	6 Months	Accredited
Tiling	3 Months	Accredited
Plumbing	3 Months	Accredited
NON-FORMAL PROGRAMMES		
Upholstery	1 Month	Non-accredited
Atchar Making	5 Days	Non-accredited
Food Processing	2 Weeks	Non-accredited
Pottery	5 Days	Non-accredited
Beads Making	1 Month	Non-accredited
Agriculture	3 Months	Non-accredited
Baking	2 Weeks	Non-accredited
End User computing	5 Days	Non-accredited
Basic Computer	3 Months	Non-accredited
Carpentry	6 Months	Non-accredited
Catering	2 Weeks	Non-accredited
Crochet	1 Month	Non-accredited
Decoration	5 Days	Non-accredited
Floor Polish making	5 Days	Non-accredited
Flower arrangement	5 Days	Non-accredited
Flower vase making	5 Days	Non-accredited
Jam Making	5 Days	Non-accredited
Needlework	5 Days	Non-accredited
Pine Gel Making	5 Days	Non-accredited
Seamstress	8 Months	Non-accredited
Sewing	6 Month/s	Non-accredited

Soap making	5 Days	Non-accredited
-------------	--------	----------------

**NB:** Please enquire with Centre Managers for the skills programmes offered across designated main centres and satellites.

## FEES

- There is no registration fee all the courses offered are free, including textbooks. All costs are covered by the Government (Department of Higher Education and Training).
- Interested individuals may register at any nearby CET/ABET centres.

## 10. Frequently Asked Questions:

1. **Q: Is AET Level 4 equivalent to Grade 12 NQF Level 4?**  
A: No, GETC/AET Level 4 is at NQF Level 1 and equivalent to Grade 9.
2. **Q: What can I study after completing AET Level 4?**  
A: You may enrol for Grade 12 Senior Certificate (ASC), if you are 21 years old and above or register to study with TVET Colleges (NCV). Only in exceptional cases, out of school youth between 18 – 21 years old who could not complete their school education due to circumstances beyond their control, as verified by the Head of Department in the Provincial Education Department.
3. **Q: What is the duration for studying AET Level 4 qualification?**  
A: A complete qualification is 1 full year. Students have the option of completing the qualification within a period of 2 years.
4. **Q: Am I able to enrol at a Community Learning Centre if I am employed?**  
A: Yes, you may enrol and attend evening classes at specific Centres/Satellites within your area
5. **Q: What is the difference between Grade 12 National Senior Certificate and Grade 12 Amended Senior Certificate?**  
A: The curriculum is the same.
  - Grade 12 NSC are rewrites, students upgrading their subjects and have portfolios for the subject from secondary school or mainstream.
  - Grade 12 SC (Amended) is for students that have passed Grade 10 and 11 and are above the age of 21.
  - Grade 12 SC (Amended) academic year starts in July/August – Exam May-June the following year.
  - Grade 12 SC (Amended) students do not have portfolios
6. **Q: After upgrading my NSC subjects, do I receive a new matric certificate?**  
A: After completion, please visit your nearest District Office within 6 – 7 months.
7. **Q: After upgrading my NSC subjects, does the department add the old subject level and new subject level on my Matric certificate?**  
A: No, the levels are not added together.
8. **Q: After completing the Skills Programme, do I receive an accredited certificate?**  
A: Yes, you will receive a SETA or QCTO certificate.
9. **Q: How much is the registration fee for AET Level 1 – 4, Grade 12 and Skills programmes?**  
A: All programmes **are free**, therefore the students in these programmes do not pay.

10. Q: Is it necessary to certify copies of ID and other documents for registration process?

A: Yes, all documents should be certified (certified within 6 months).

11. Q: Can I be allowed to only use my passport as a foreign student registration?

#### Frequently Asked Questions (continues)

A: Yes, prospective student should submit a certified copy of their passport, proof of residents and previous report attached to the application.

12. Q: Can I register and do self-study (Studying from home)?

A: Different options are available i.e., attending afternoon classes or studying from home. Self-study is possible for Grade 12; however, it is **highly recommended** that students participate and write the preparatory exam. AET Level 1 – 4 students cannot study from home because there are compulsory portfolio tasks that need to be completed.

13. Q: Can I be allowed to register for AET Level 1 – 4 if I do not have the previous report of the last Grade – Standard passed?

A: Yes, you will be requested to write a placement assessment. To assess in which Level the student should be placed.

14. Q: What happens if I experience any challenges during the year that may disturb my studies?

A: Each centre has four lecturers nominated for Student and Community Support Services (SCSS). If you experience any challenges, report to any of these lecturers and they will provide necessary support.

15. Q: Are students with special needs (Deaf, Visually Impaired, Physically Impaired etc.) accepted?

A: Yes, Limpopo CET College is building towards inclusive centres. There are few centres that are resourced to accept student with special needs. Currently not all centres are resourced to accept these students. Enquire with your nearest centre so that they advise.

## 11. Main Centres and Satellites

VHEMBE DISTRICT				
COMMUNITY LEARNING CENTRE	SURNAME & INITIALS	CONTACT NUMBER	OPERATING HOURS	ADDRESS
<b>MAKWARELA CLC (MAIN CENTRE)</b>	SIDOGI DE	0721374894	09h00-12h00	Vhembe TVET College, Makwarela Campus
<b>BUNZHE SATELLITE</b>	MUTHAMBI LR	0723526275	09h00-12h00	Mbilwana Primary School (old school), Bunzhe Tshififi Village
<b>MADZIVHANDILA SATELLITE</b>	MANENDZHE NG	0784634424	14h00-17h00	Tshikhudini Primary School, Tshikhudini Village
<b>MATONDONI SATELLITE</b>	MUDAU MG	0764948219	09h00-12h00	Matondoni Primary School, Tshikunda Village
<b>MULEDANE SATELLITE</b>	NENGUDZA TK	0827259236	09h00-12h00	Muledane Primary School, Muledane Village
<b>MUVHITSHIKOVHA SATELLITE</b>	MAPHANGWA NO	0827528338	14h00-17h00	Muvhi-Tshikovha Primary School, Tshikovha Village
<b>NGUDZA SATELLITE</b>	NELUFULE NE	0721338763	14h00-17h00	Ngudza Primary School, Ngudza Village
<b>RAMUSHASHA SATELLITE</b>	RADZILANI TM	0729977474	14h00-17h00	Ramushasha Primary School, Mukula Village
<b>REDEEMING SATELLITE</b>	MADADZHE VT	0716126333	14h00-17h00	Khubvi Primary School, Khubvi Village
<b>TSHINETISE SATELLITE</b>	DAVHANA TS	0825118979	14h00-17h00	Tshinetisi Primary School, Tshitomboni Village
<b>MATATSHE SATELLITE</b>	BONGWE AR	0847477047	09h00-12h00	Matatshe prison Matatshe
<b>MALAMULELE PUBLIC WORKS CLC (MAIN CENTRE)</b>	MALULEKE AG	0738526201	14h00-17h00	Mabuyisi Primary School, Malamulele Township, Section A

<b>BOTSOLENI SATELLITE</b>	MABASA S	0732887877	14h00-17h00	Mhinga Senior Primary School, Mhinga Village, Next to Sunduza Junior Primary School
<b>GABA SATELLITE</b>	NENZHELELE TR	0766501864	14h00-17h00	Gaba Primary School, Gaba Village
<b>HOJI SATELLITE</b>	SITHOLE MS	0787891650	14h00-17h00	Govhu Primary School, Govhu Village Next to Govhu Creche
<b>LUKALO SATELLITE</b>	NETSIANDA TM	0723948602	14h00-17h00	Lukalo Primary School, Lukalo Village
<b>MAGOMANI SATELLITE</b>	LUKHWA TG	0792650620	14h00-17h00	Magomani Primary School, Magomani Village
<b>MAKAHLULE SATELLITE</b>	MAHESU TG	0734594482	14h00-17h00	Joas Phahlela Primary School, Makuluke Village
<b>MASETONI SATELLITE</b>	MULOVHEDZI NR	0724661699	14h00-17h00	Masetoni Primary School, Tshamulavhu Village, Ha-Lambani
<b>NYAVANI SATELLITE</b>	MADILONGA NC	0826861352	14h00-17h00	Nyavani Primary School, Nyavani Village)
<b>SHINGWEDZI SATELLITE</b>	BILANKULU NE	0799964895	14h00-17h00	Makhapule Primary School, Muchipisi Village
<b>TWANANANI SATELLITE</b>	CHABALALA TJ	0835498965	14h00-17h00	Twanani Primary School, Mudabula Village
<b>VONGANI SATELLITE</b>	MAKONDO TN	0834758193	14h00-17h00	Vongani Primary School, Saselamani Village, Malamulele
<b>MUSINA CLC (MAIN CENTRE)</b>	MPONDI ND	0829560080	14h00-17h00	Makushu Primary School, Nancefield
<b>DZUMBATHOHO SATELLITE</b>	MADAVHA A	0769824537	14h00-17h00	Tondani Primary School, Dzumbathoho Village
<b>LOUIS TRICHARDT SATELLITE</b>	KHOMOLA MF	0793484408	09h-12h00	Louis Trichardt Prison



<b>MADABANI SATELLITE</b>	MARINDI TI	0724674424	10h00-13h00	Muraleni Primary School, Madabani Village
<b>MAMUHOHI SATELLITE</b>	MAGONONO DA	0790506787	11h00-14h00**	Matanda Primary School, Matandi Village
<b>MASEDI SATELLITE</b>	SIOBO RS	0711971103	13h00-16h00	Masedi Primary School, Tshikota Township
<b>MATHEDE SATELLITE</b>	MULAUDZI NS	0723161613	12h00-16h00	Mathede Secondary School, Murunwa Village, Makhado
<b>MAWONI SATELLITE</b>	MAFUNA DN	0725100682	09h00-12h00	Maranikhwe Primary School, Tshituni Village
<b>MUDUNUNGU SATELLITE</b>	RATOMBO AE	0726352658	13h00-16h00	Mudunungu Primary School, Mudunungu Village, Nzhelele
<b>MUGIDANE SATELLITE</b>	RADUVHA A	0760175025	14h00-17h00	Mugidane Primary School, Tshiozwi Village
<b>MULWELI SATELLITE</b>	MKHAVELE RH	0833295031	14h00-17h00	Mulweli Primary School, Mpheni D2
<b>SILOAM SATELLITE</b>	SINGO PB	0663980141	12h00-15h00	Siloam Primary School, Siloam Village, Nzhelele
<b>TSHIKOVHANI SATELLITE</b>	NEVHUTALU TP	0738717367	14h00-17h00	Madala Primary School, Thondoni Village
<b>TSHIKONDENI CLC (MAIN CENTRE)</b>	GAVHI NL	0725893886	09h00-12h00	Tshikondeni Primary School, Mutale Village
<b>LUKAU SATELLITE</b>	RAMUIMA NT	0822544829	14h00-17h00	Lukau Primary School, Lukau Village
<b>MARAXWE SATELLITE</b>	MUDALAHOTHE MJ	0724086213	14h00-17h00	Maraxwe Primary School, Maraxwe Village
<b>MBONENI SATELLITE</b>	NETILI LJ	0760930029	14h00-17h00	Mboneni Primary School, Tshibvumo Village, Dzimauli
<b>MUFULWI SATELLITE</b>	MASINDI TH	0723121307	14h00-17h00	Mufulwi Primary School, Mufulwi Village
<b>MUKUNUNDE SATELLITE</b>	RAMPHABANA MM	0738188988	11h00-14h00	Mukununde Primary School,

				Mukununde Village
<b>MUSWODI SATELLITE</b>	NETSHIPALE LF	0722585216	14h00-17h00	Govho Primary School, Muswodi Village
<b>TSHIDONGOLOLWE SATELLITE</b>	MUALUSI LP	0768817757	14h00-17h00	(Tshidongololwe Primary School, Tshidongololwe Village)
<b>TSHIOMBO SATELLITE</b>	NEMAVHOLA FA	0717865349	09h00-12h00	Tshiombo Primary School, Tshiombo Village
<b>TSHIPISE SATELLITE</b>	NETSHAMBIDI MF	0726788412	10h00-13h00	Tshipise Primary School, Tshipise Village
<b>VHURIVHURI SATELLITE</b>	NEGOGOME LT	0792468118	14h00-17h00	Vhurivhuri Primary School, Vhurivhuri Village
<b>DAMBALWASHE CLC (MAIN CENTRE)</b>	KONE M	0793742592	13h00-16h00	Dambalwashe primary school, Shayandima Town
<b>FRANK MAKHASWAKULE SATELLITE</b>	NETSHIKHUDINI SC	0724902548	14h00-17h00	Frank Makhaswakule Primary School, Mashau Village
<b>GIJA SATELLITE</b>	NKUZANI TJ	0722189580	14h00-17h00	Gija Primary School, Nkuzana Village
<b>KHAPAKHAPHA SATELLITE</b>	CHAUKE HM	0726571605	14h00-17h00	Khapakhapa Primary School, Majosi Village
<b>LIGEGE SATELLITE</b>	MUTHIGE A	0794880224	14h30-17h30	Ligege Secondary School, Duthuni Village
<b>MAANDAMAHULU SATELLITE)</b>	MASHAMBA MA	0825096800	14h00-17h00	Maandamahulu Primary School, Ha-Mulima, Pfunanani Village
<b>MANGOMANI SATELLITE</b>	NELWAMONDO AG	0712171380	14h00-17h00	Mayeke Primary School, Xikundu Xifaxani Village
<b>MARIADZE SATELLITE</b>	PHOPHI PC	0835842390	14h00-17h00	Mariadze Primary School, Mashau Village
<b>MASAKONA SATELLITE</b>	BILANKULU DF	0763299492	14h00-17h00	Masakona Primary School, Masakona Village
<b>MASHAMBA SATELLITE</b>	MASHAU NE	0732302010	13h00-16h00	Mashamba Presidential School, Bushy Park

<b>MATSI LA SATELLITE</b>	MADAVHU MM	0738247999	13h30-16h30	Matsila Primary School, Matsila Village, Masia
<b>MBOKOTA SATELLITE</b>	KHOMANE NT	0712595677	13h00-16h00	Mbokota Primary School, Mbokota Village, Elim
<b>MPHENI SATELLITE</b>	NENGWEKHULU MC	0720135827	13h00-16h00	Mpheni Primary School, Mpheni Village
<b>MUKHONO SATELLITE</b>	CHAUKE H	0767452846	14h00-17h00	Bungeni Primary School, Bungeni Village
<b>MUTANGWA MANUGU SATELLITE</b>	NEMAFOHONI TA	0826415023	13h00-16h00	Mutangwa Manugu Junior Primary School, Tsianda Village
<b>NANDONI SATELLITE</b>	NEMAVHULANI KS	0714577100	13h00-16h00	Nandoni Primary School, Vuwani Township
<b>RASIVHETSHELE SATELLITE</b>	SHITIBA T	0817524862	13h00-16h00	Rasivhetshele Primary School, Ha-Mangilasi Village
<b>SITHUMANI SATELLITE</b>	NGOBENI RD	0734441948	14h00-17h00**	Sithumani Primary School, Chavani: Bokisi Village, Hlanganani
<b>TSHILIDZINI SATELLITE</b>	NETHONONDA AC	0722151229	14h00-17h00	Makumbane Primary School, Tshisahulu Village
<b>XILUMANI SATELLITE</b>	MAKHUBELE NJ	0726325442	14h00-17h00**	Xilumani Primary School, Chavani Village

<b>CAPRICORN DISTRICT</b>				
<b>COMMUNITY LEARNING CENTRE</b>	<b>SURNAME &amp; INITIALS</b>	<b>CONTACT NUMBER</b>	<b>OPERATING HOURS</b>	<b>ADDRESS</b>
<b>SESHEGO HOSPITAL CLC (MAIN CENTRE)</b>	MAUBANE ML	0715017359	9h00-12h00	Lotanang Primary School, Seshego Zone 2 next to Mastec Institute
<b>BAKONE CLC (SEKGWARI PRIMARY SCHOOL)</b>	SEOPA MP	0828118329	10h00-13h00	Sekgwari Primary School, Setumong, Ga-Matlala
<b>POLOKWANE MILITARY SATELLITE</b>	MONTJA T	0822198199/ 0646844075	14h00-17h00	Kabelo Secondary School, Greenside, Polokwane

<b>HOSEA NTSOANE SATELLITE</b>	SEKALO RM	0837622246	12h00-15h00	Hosea Ntsoane Primary School, Chebeng Village
<b>LEPHALALA SATELLITE</b>	RAMALATSO MG	0792774997	14h00-17h00	Lephalala Primary School, Botlokwa
<b>LEWENG SATELLITE</b>	MOKWELE PK	0720373887	10h00-13h00	Nthema Secondary School, Moletjie Village,
<b>MADUMA SATELLITE</b>	CHOKOE MW	0724161114	10h00-13h00	Maduna Secondary School (old school), Juno Village, Ga-Matlala,
<b>MAKWEYA SATELLITE</b>	KONYANA MC	0766205515	14h00-17h00	Matsiri Mokgokong Primary, Ga-Mokgokong, Moletjie
<b>MOKGOBA SATELLITE</b>	TEBELE KG	0606402245/ 0722366333	14h00-17h00	Moloto Primary(old school), Mabokelele Village, Moletjie
<b>MOSIMA SATELLITE</b>	SEKGOBELA MN	0710000750	13h00-16h00	Mosima Primary School Springs Village, Dwarsriver
<b>PIETERSBURG COMPREHENSIVE SATELLITE</b>	MALATJI MS	0732791746	13h30-16h30	Pietersburg Comprehensive School, 62 Magazyn Street, Polokwane
<b>PITSI-A-MASHILO SATELLITE</b>	KOLA FM	0818500196/ 0725296342	9h00-12h00	Pitsi-a-Mashilo Primary School, Ga-Mabiloane Village
<b>POLOKWANE CORRECTIONAL</b>	RAMADISHA PH	0726299019	09h00-12h00	CNR Landros and Hospital Str, next to Thobela FM
<b>RAMOTHLALE SATELLITE</b>	MAEKO MJ	0798468451	14h00-17h00	Ramothlale Primary School, Ga Ramokgopa, Botlokwa
<b>REV MP MALATJI SATELLITE</b>	NKOANA MS	0792773606	13h00-16h00	ALF Makaleng Primary School, Seshego Zone 5, Seshego Township
<b>SOKA-LEHOLO SATELLITE</b>	MOKGALAPA MM	0825948613	9h00-12h00	Soka Leholo High Primary School, Ga Makgato, Botlokwa
<b>MAPELOANA CLC (MAIN CENTRE)</b>	MARUMA MG	0769634728	9h00-12h00	Mapeloana Secondary School,Thakgalang: Ga-Mothapo Village, Nobody
<b>DIKOLOBE SATELLITE</b>	RAGOPHALA MJ	0824009530	14h00-17h00	Dikolobe Primary School, Mankweng Township
<b>MAPHUTO SATELLITE</b>	LEKGANYANE ML	0711763529	12h00-15h00	Solomondale Primary School, Solomodale Township

<b>MOTHIBA SATELLITE</b>	MOTHAPO ME	0711539196	13h30-16h30	Mothiba Primary School, Ga-Mothiba Village
<b>MOTHOLO SATELLITE</b>	MAMABOLO MJ	0723540923/ 0687293067	11h00-14h00	Makgwadiba Primary School, Mamotintane Village
<b>NKOSHILO SATELLITE</b>	MOLEPO MJ	0721129900	14h00-17h00	Nkoshile High School, Segoreng Village, Ga-Mamabolo
<b>NTJI-MOTHAPO SATELLITE</b>	MAILULA MP	0769738836	12h00-15h00	Ntji Mothapo Primary School, Ga Ramogale, Ga Mothapo
<b>SEBAYENG SATELLITE</b>	BOPAPE PM	0761569172	11h30-14h30	Sebayeng Primary School, Sebayeng Village
<b>MEGORING SATELLITE</b>	MPHEKGOANE ME	0711868516	14h00-17h00	Megoring Primary School, Mentz ga Shiloane
<b>THABA MOOPO HOSPITAL CLC (MAIN CENTRE)</b>	SELEMA ME	0766524759	9h00-12h00	Ntseeeyekgopu Primary School, Lebowakgomo Zone A
<b>BOLOPA SATELLITE</b>	NTSOANE RF	0726719826	11h00-14h00	Bolopa Primary School, Ga Mphahlele, Hweleshaneng
<b>FEKE SATELLITE</b>	MOGANO FN	0739549743	09h00-12h00	Ditsepu Secondary School, Maja-Moshate
<b>HLAGASE SATELLITE</b>	MPHAHLELE WR	0727359692	11h00-14h00	Hlagase Primary School, Maruleng Village
<b>MAKGWADING SATELLITE</b>	MMAKO TJ	0722576946	09h00-12h00	Mokgohloe Makopo Secondary School, Ga-Magatle (old school) Village
<b>MALEMATI SATELLITE</b>	MPHAHLELE RC	0829340948	14h00-17h00	Dikobe molaba Primary School (old school), Lekurung Village, Ga-Mphahlele
<b>MATSHUMU SATELLITE</b>	BABILI MA	0823626761 0662381637	09h00-12h00	Matshumu Primary School, Moletlane Village
<b>THOKGWANENG SATELLITE</b>	SOAFO KM	0715485243	09h00-12h00	Thokgwaneng Primary School, Ga-Chuene Thokgwaneng Village
<b>TINTELA SATELLITE</b>	MASHELE SM	0713649141	09h30-12h30	Tintela Primary School, Mogoto Village, Zebediala
<b>MAFEFE PRIMARY SATELLITE</b>	MAMPA OS	0717505289	09h00-12h00	Mafepe Primary School, Mafepe Betle Village, Nokutlou

<b>HELEN FRANZ CLC (MAIN CENTRE)</b>	MOETJIE MA	0716273333	09h00-12h00	Old Ratanang Special School, Senwabarwana, Bochum Town
<b>JOHN MOLOKOMME SATELLITE</b>	SEHONA VT	0664176594	09h00-12h00	JOHN MOLOKEME PRIMARY, BOCHUM, Blouberg
<b>KGOTLOANA SATELLITE</b>	MANABILE MR	0714053236	09h00-12h00	Kgotloana Primary School, Mohodi Ga Mathata
<b>MABOI SATELLITE</b>	NKOANA MP	0827625347	12h00-15h00	Maboi Primary School, Ga-Makgato Kromhoek
<b>SENWABARWANA SATELLITE</b>	MOLOTO MT	0796709183	09h00-12h00	Senwabarwana Primary School, Dilaineng

<b>MOPANI DISTRICT</b>				
<b>COMMUNITY LEARNING CENTRE</b>	<b>SURNAME &amp; INITIALS</b>	<b>CONTACT NUMBER</b>	<b>OPERATING HOURS</b>	<b>ADDRESS</b>
<b>Tivumbeni CLC (Main CENTRE)</b>	MABUNDA BT	0783011338	10h00-13h00	Tivumbeni EMPC, Dan Village
<b>BALULE SATELLITE</b>	MAFOGO MR	0799658816	14h00-17h00	Balule Primary School, The Oaks Village, Ga-Sekororo
<b>LENYENYE SATELLITE</b>	MOHALE MA	0730006253	14h00-17h00	Lenyenye Senior Primary School, Lenyenye Township
<b>LEPELLE SATELLITE</b>	LETEBELE MG	0761225400	14h00-17h00	Butswana Primary School, Ga-Sekororo
<b>MAFARANA SATELLITE</b>	HUTAMO R	0738844614	14h00-17h00	Mafarana Combine Primary School, Mafarana Village, Tzaneen
<b>MAHLABEZULU SATELLITE</b>	SENWANA ME	0739954010	14h00-17h00	Mahlabezulu Primary School, Babanana Village
<b>MAROBONI SATELLITE</b>	RAKGWALE JK	0712981396	14h30-17h30	Maroboni Primary School, Makhwibidung Village
<b>MARUMOFASE SATELLITE</b>	SEROTO TF	0731400783	14h00-17h00	Marumofase Full-Service School, Marumofase Village
<b>MAVHABAZA SATELLITE</b>	RIKHOTSO GA	0729806852	14h00-17h00	Mavhabaza Primary School, Joppie Village, Nwamitwa

<b>MMAKAU SATELLITE</b>	MASHILANE MP	0791713022	15h00-18h00	Mmakua Primary School, Loss Village, Ga-Sekororo
<b>MPAPALATI SATELLITE</b>	NGOBENI MJ	0835509532	14h00-17h00	Mpapalati Primary School, Xihoko Village
<b>NAPSCOM SATELLITE</b>	SEKGOTLABORAGATE	0727214912	11h00-14h00	Napscon High School, Tickline Village
<b>MOLALATLADI SATELLITE</b>	KOMANE LE	0609589385	14h00-17h00	Molalatladi Primary School, Metz Trichardsdal Village, Ga-Sekororo
<b>NWAMUNGOLOLO SATELLITE</b>	NTSHUKETANA SL	0732445644	14h00-17h00	Nwamungololo Primary School, Rikhotso Village
<b>PONANI SATELLITE</b>	MAROALE MO	0725885890	14h00-17h00	Ponani Primary School, Mhlaba Cross Village
<b>SEBONE SATELLITE</b>	MOKGOATHE MD	0768275090	14h00-17h00	Sebone Primary School, Mokgoloboto Village
<b>TIMAMOGOLO SATELLITE</b>	SHAYI MG	0763972501	14h00-17h00	Timamogolo Primary School, Tickeyline Village, Ga-Sekororo
<b>GIYANI COMPREHENSIVE CLC (MAIN CENTRE)</b>	MALULEKE BJ	0793427080	11H00-14H00	Giyani Comprehensive Primary School, Giyani Section F
<b>BENSON SHIVITI SATELLITE</b>	MAKHUBELE ES	0835654949	14h00-17h00	Benson Shiviti Primary School, Thomo Block 7 Township
<b>FAZA SATELLITE</b>	MUKANSI SF	0713342744	14h00-17h00	Faza Primary School, Nsavulani Village
<b>JAMELA SATELLITE</b>	MTHOMBENI VM	0763646346	11h00-14h00	Jamela Primary School, Refileo Village
<b>KHOMISANI SATELLITE</b>	MAGOMANI BC	0793198068	14h00-17h00	Khomisani Primary School, Bode Village, Giyani
<b>LEBAKA SATELLITE</b>	SELOTOLE NS	0766063256	14h00-17h00	Lebaka Primary School,

				Mohlabeneng Village
<b>MADZIVI SATELLITE</b>	MAHORIT	0787130188	14h00-17h00	Madzivi Primary School, Homu 14A Township, Giyani
<b>MAHOCHOMBA SATELLITE</b>	SHONDLANI MT	0714647834	11h00-14h00	Mahochomba Primary School, Rotterdam Village
<b>MAMAILA SATELLITE</b>	RAMATSHEKGISA MF	0732462546 0732462816	14h00-17h00	Mamaila Primary School, Mamaila Kolobetona Village
<b>MASWANGANYI SATELLITE</b>	NWANDULE VG	0766264886	11h00-14h00	Fuyatha Primary School, Siyandhani Village
<b>MAUFOTA SATELLITE</b>	MORISI NG	0732926079	14h00-17h00	Maufota Primary School, Maupa Village
<b>NGHILAZI SATELLITE</b>	MBHALATI TE	0784737373	13h00-16h00	Nghilazi Primary School, Guwela Village, Giyani
<b>NKURI SATELLITE</b>	MATHYE HS	0605048013	12h00-15h00	Nkuri Primary School, Nkuri Sifasonke Village
<b>PFUNANI SATELLITE</b>	MATHEBULA TL	0833744391	13h00-16h00	Pfunani Primary School, Mninginisi Block 2 Village
<b>THABANATSHWANA SATELLITE</b>	MATHEBULA ZL	0833744391	14h00-17h00	Thabanatswana Primary School, Chabelane Village
<b>RAMAITE SATELLITE</b>	MALATJI PJ	0789522440	14h00-17h00	Ramaite Primary School, Ga-Phooko Village
<b>RAMOLLO SATELLITE</b>	MALULEKE RM	0765791220 0736457025	11h00-14h00	Ramollo Primary School, Belleview Township
<b>SEBELAOLO SATELLITE</b>	RAMPUTLA MF	0762513950	14h00-17h00	Sabelaolo Primary School, Soetfontein Village: Ga-Raphahlelo
<b>PONDO CLC (MAIN CENTRE)</b>	MHLONGO BS	0835634653	09h00-12h00	Pondo Combine School, Lulekani Township



<b>7 SAI BN CAMP</b>	RIKHOTSO EH	0789127045	14h00-17h00	7 SAI BN Camp, Phalaborwa, next to Phalaborwa Gate
<b>BOLLANOTO SATELLITE</b>	SEEMELA ME	0781771852	14h30-17h30	Ballanoto Primary School, Makhushane Maune Village
<b>LEBEKO SATELLITE</b>	MTHOMBENI TE	0724957756	14h30-17h30	Lebeko High School, Mashishimale Village
<b>MASHAVELA SATELLITE</b>	MANGANYI MJ	0731757828	08h00-11h00	Devine Healing Christian Church, Phalaborwa, Benfarm
<b>PHULANI BYIHOLA SATELLITE</b>	MATHEBULA DB	0781935094	14h00-17h00	Phulani Byihola Primary School, Phalaborwa, Benfarm
<b>NWARISENGA SATELLITE</b>	MALULEKE NF	0769384766	13h00-16h00	Nwarisenga Primary School, Lulekani Township
<b>RETHABILE SATELLITE</b>	KOMANA MJ	0722518628	14h30-17h30	Zamani Primary School, Namakgale
<b>ST PATRICK MATHIBELE SATELLITE</b>	MAMETJA SJ	0723394448	14h30-17h30	St Patrick Primary School, Makhushane Village, Namakgale, Phalaborwa
<b>TITIRHELENI SATELLITE</b>	MABUNDA JR	0604550321	14h00-17h00	Lulekani Primary School, Lulekani Township
<b>VATSWATSI SATELLITE</b>	MALATJI KW	0733893973	14h00-17h00	Vatswatsi Primary school, Mohale Village, Phalaborwa
<b>MODJADJI CLC CENTRE (MAIN)</b>	RAKABE JM	0783844448	10h00-13h00	Letaba TVET College-Modjadji Campus, Ga-Kgapane Township
<b>MALOBA SATELLITE</b>	KAPA MC	0761379109	13h00-16h00	Maloba Primary School, Sekhemini-Botshabelo Village

<b>MATSHWI SATELLITE</b>	MOKUMO C	0732372487	14h00-17h00	Matshwi Primary School, Matshwi Village
<b>MOLEKETLA SATELLITE</b>	MAHLOROMELA MJ	0736004633	10h00-13h00	Moleketla Primary School, Moleketla Village, Bolobedu South
<b>MOKWASELE SATELLITE</b>	BVUMA RN	0835169721	14h30-17h30	Mokwasele Primary School, Ga-Kgapane Township
<b>RATHAGA SATELLITE</b>	SESHOENI ME	0727653616	14h00-17h00	Rathaga Primary School, Bo Dupe Village, Madumeleng
<b>RAMAROKA SATELLITE</b>	MBOMBI SS	0632259347	14h00-17h00	Ramaroka Primary School, Modjadji Village
<b>SENAKWE SATELLITE</b>	MAKUMBILA NS	0783122145	14h00-17h00	Senakwe Primary School, Matipane Village

<b>WATERBERG DISTRICT</b>				
<b>COMMUNITY LEARNING CENTRE</b>	<b>SURNAME &amp; INITIALS</b>	<b>CONTACT NUMBER</b>	<b>OPERATING HOURS</b>	<b>ADDRESS</b>
<b>MAGEME CLC (MAIN CENTRE)</b>	PAPO PB	0826302484	08h00-11h00	Old Crèche-Boledi, Sekgakgapeng Village
<b>ALFRED B MAKAPANI SATELLITE</b>	MONYE RR	0824014919	11h30-14h30	Alfred B Makapani Mosesetjane Village
<b>CHUMANA SATELLITE</b>	SHIVURI MS	0660533550	14h30-17h30	Chumana Primary School, Tshamahansi Village
<b>JAHANNES MASIBE SATELLITE</b>	NKOANA RS	0718887343	09h00-12h00	Johannes Masibe Primary, Mapela: Mashahleng Village, Mokopane
<b>JORDAN SATELLITE</b>	MANAMELA MM	0828331629	09h00-12h00	Nkeketlhalwa Primary School, Diphichi Village
<b>MAAKA MALEKA SATELLITE</b>	SHOGOLE CS	0730231467	09h00-12h00	(old school) Fred Ledwaba Secondary School Mahwelereng Township Zone 1

<b>MABUELA SATELLITE</b>	RAMMUTLA MR	0766061441	09h00- 12h00	Mabuela Ramorulana Primary School, Mapela Village
<b>KGOBUKI SATELLITE</b>	MASOLA MW	0733938388	11h00- 14h00	Kgobuki Primary School, Taueatsoala Rebone Village
<b>GIVEN MANGOLO SATELLITE</b>	MABOTE NI	0736707967	08h30- 11h30	Suswe Primary School, Mabula Village
<b>MASODI SATELLITE</b>	MOKOENA LM	0764383814	09h00- 12h00	Masodi Secondary School, Masodi Village
<b>RAMOTHLWATSWANE SATELLITE</b>	MPHEROANE RR	0727012738	10h00- 13h00	Ramotlhwatswane Primary School, Kromkloof Village, Bakenberg
<b>RANTJIE SATELLITE</b>	MANAMELA MR	0663565674	08h30- 11h30	Rantjie Lower Primary School Lesodi Village, Mokamole
<b>TSELAPEDI SATELLITE</b>	MABUSELA MS	0636741368	09h00- 12h00	Tselapedi Primary School, Ga- Mathekga Village
<b>MMADIKANA SATELLITE</b>	MARAKALALA MD	0725904765	09h00- 12h00	Mmadikana Secondary School, Moshate Village, Mokopane
<b>MOROBA SATELLITE</b>	MANAMELA RL	0823498916	08h00- 11h00	Cornelius Masibe Primary School, Armoed Village
<b>PHOMELELO CLC (MAIN CENTRE))</b>	LEVIMBI DSM	0761969288	15h00- 18h00	Maope High School, Bela Bela
<b>BATHOPELE SATELLITE</b>	MONYELA LS	0723174715	14h00- 17h00	Bathopele High School, Pienaarsrivier Township, Bela Bela
<b>KRAUSE SATELLITE</b>	MONYEPAO SG	0724142896	15h00- 18h00	Krause Primary School, Northam Village
<b>LENTSWETSHIPI SATELLITE</b>	MKHOSANA N	0605038367	14h30- 17h30	Mabogopedi Secondary School, Regorogile
<b>MAHLASEDI SATELLITE</b>	MOTEKE RG	0786930769	10h00- 13h00	Mahlasedi Primary School, Vaalwater Township
<b>MAKHUTJISHA SATELLITE</b>	LANGA LP	0729562049	16h00- 19h00	Makhutjisha Secondary School, Mookgopong Village

<b>MODIMOLLE CORRECTIONAL SATELLITE</b>	MALOKA SM	0837577639	09h00- 12h00	Modimolle Correctional, Modimolle Town
<b>PHAGAMENG SATELLITE</b>	BALOYI RJ	0727133090	09h00- 12h00	Modimolle Primary School, Township Modimolle.
<b>NELSON SKOP CLC (MAIN CENTRE)</b>	SETHLARE SJ	0657448298	15h00- 18h00	Nelsonskop Primary School, Marapong Township, Lephalale
<b>TSHUKUDU SATELLITE</b>	SHIKO MF	0765306444 0655611115	14h00- 17h00	Bakgalaka Primary School, Shongoane 1 Village
<b>BAPHOTING SATELLITE</b>	TLHONG MJ	0722313757	09h00- 12h00	Baphoting Primary School, Seleka Village
<b>MOABI SATELLITE</b>	MOSIMA MJ	0791971276	12h00- 15h00	Thabang High School, Ga- Maeteletja Village

<b>SEKHUKHUNE DISTRICT</b>				
<b>COMMUNITY LEARNING CENTRE</b>	<b>SURNAME &amp; INITIALS</b>	<b>CONTACT NUMBER</b>	<b>OPERATING HOURS</b>	<b>ADDRESS</b>
<b>MAPHOPHA CLC (MAIN CENTRE)</b>	SEKGOBELA TC	0825962250	07h45- 15h00	Maphopa Primary School, Ga- Maphopa Village
<b>DIKGABJE SATELLITE</b>	MAFOKO KL	0721298139	14h00- 17h00	Dikgabje Primary School, Ngwanamatlang Village
<b>DITHOTWANEN G SATELLITE</b>	MAOTA KG	0822591301	09h00- 12h00	Dithotwaneng senior Secondary School, Mphanama Village
<b>INDIE SATELLITE</b>	MATSIMELA SP	0725130006	09h00- 12h00	Moroamoche Primary School, Mohlaletsi Village, Apel
<b>JACOB MARWALE SATELLITE</b>	SETLAMORA GO TS	0723004155/ 0825645517	09h00- 12h00	(old School) Mokhulwane Secondary School, Leboeng Village
<b>MAPHOTLE SATELLITE</b>	NCHABELEN GJ	0722093047	09h00- 12h00	Maphotle Primary School, Ga Nkwana Village

<b>MASHILABELE SATELLITE</b>	PHALA MC	0791161238	09h00-12h00	Mashilabele Primary School School, Ga-Oria
<b>MODIMOLLE SATELLITE</b>	MAKUTU MS	0799717119/ 0793207357	09h00-12h00	Modimolle Primary School, Ga Nkwana, Malogeng
<b>MPHANAMA SATELLITE</b>	DIPHOFA MM	0723527133	14h00-17h00	Mphanama Primary School, Mphanama Village
<b>NKOTSANE SATELLITE</b>	NCHABELEN G LA	0820435899	10h00-13h00	Nkotsane Primary School, Mankotsane Village, Apel
<b>PHUKUBJANE SATELLITE</b>	SEFOKA MS	0723555446	11h00-14h00	Moenyane Primary School, Strydkraal A Village Ga-Masha
<b>ARETHABENG SATELLITE</b>	RATAU CR	0725731955/ 0682366450	10h00-13h00	Arethabeng Primary School, Vergelegen B, opposite Kwena Spares, Jane Furse
<b>KGOBISE SATELLITE</b>	MAABANE MN	0766817054	13h30-16h30	Kgobise Primary School, Ga-Mashegoana, Village Schoonoord
<b>MAKGANE SATELLITE</b>	MAWELA SP	0727046549	14h00-17h00	Makgane Primary School, Ga Mogashoa Village
<b>MALEGALE SATELLITE</b>	MAKGATA MA	0827045858	12h00-15h00	Malegale Primary School, Madibaneng Village
<b>MANTE SATELLITE</b>	MOHLALA BS	0796507514	14h00-17h00	Shopiane Primary School, Longtil Village
<b>NOKOMEETSE SATELLITE</b>	MAKGOGA MS	0823467929	14h00-17h00	Nokomeetse Primary School, Schoonoord phase 4
<b>BOGWASHA CLC (MAIN CENTRE)</b>	MAPHORI ME	0794384415	14h00-17h00	Bogwasha Primary School, Praktiseer Township

<b>KGAUTSWANE SATELLITE</b>	MORUDI JP	0721208088	10h00-13h00	Kgautswane Multiple Purpose Community Centre
<b>MAFOLO SATELLITE</b>	MABOTHA MM	0794386402	14h00-17h00	Mafolo Primary School, Motlolo Village
<b>MAHUDU SATELLITE</b>	MAHLATJI RJ	0714674891	13h00-16h00	Mahudu Primary School, Maruping Village, Atok: Burgersfort
<b>MAKGALANOTO SATELLITE</b>	MAKGOLANE MJ	0660006630	14h00-17h00	Makalanoto Primary School, Ga-Phasha, Burgersfort
<b>MAKGOPA SATELLITE</b>	SEHLAPELO RR	0760614093	10h00-13h00	Setlamorago Primary School, Serasa Village, Magakala area
<b>MNYAMANE SATELLITE</b>	PHALADI MD	0608674727	09h00-12h00	Gangaza Secondary School
<b>BONWANKWE SATELLITE</b>	MALATJI MH	0828626079	09h00-12h00	Bonwakwe Primary School, Mooihoek Village
<b>ROOTSE SATELLITE</b>	MOSOMA SJ	0720312739	14h00-17h00	Gowe Primary School, Gowe Village
<b>MATANYANE SATELLITE</b>	MATLOU RR	0725514245	13h00-16h00	Matanyane Primary School, Tjebeng Village, Driekop
<b>LEKUBOSHA SATELLITE</b>	PHALA MJ	0725987575	14h00-17h00	Lekubushai Primary School, Taung Village, Burgersfort
<b>ROTOLE SATELLITE</b>	MAPHORU MR	0723140022	14h00-17h00	Rotole Primary School, Penge Gamokgotho Village, Bohlabela
<b>MOREWANE SATELLITE</b>	MOKGOTHO BV	0713701030	14h00-17h00	Nthame Primary School, Riba-Cross Village, Burgersfort
<b>OR TAMBO CLC (MAIN CENTRE)</b>	NGWENYA NR	0828677462	14h00-17h00	OR Tambo Combined School, Tambo Square Village

<b>IKAGENG SATELLITE</b>	MOLEMISI PF	0721792448	14h00-17h00	Nkadimeng Primary School, Moteti Village
<b>MAHLABANE SATELLITE</b>	RAMONYAI MT	0823936006	14h00-17h00	Ramatsetse Primary School, Stomp Village
<b>VUYANI SATELLITE</b>	MOGOSWAN A NV	0662706680	14h00-17h00	Lusaka Primary School, Lusaka Village
<b>MMAPULE SATELLITE</b>	MATHEBE E	0837634516	14h00-17h00	Bantwane Primary School, Ntwane Village
<b>PHUTHADITSHA BA SATELLITE</b>	KEKANA SM	0608700184	10h00-13h00	Rathoke Primary School, Rathoke Village
<b>SOMISANANG SATELLITE</b>	MADIBA GM	0820778366	14h30-17h30	Sibisi Primary School, Mapikereng Village
<b>MAKEEPSYLEI SATELLITE</b>	MOKAU AT	0711736574	09h00-12h00	Mmakola Primary School, Klooper Village
<b>MAKALAKANYE SATELLITE</b>	MOKONYANE KM	0790519063	10h00-13h00	Makalakanye Primary School, Uitvlugt Village
<b>KHUDUTSEKE CLC (MAIN CENTRE)</b>	NTSHETSHEN G MJ	0781578173	10h00-13h00	Arkona Primary School, Ga-Masemola Village
<b>BOSELE SATELLITE</b>	MTSHWENI PM	0823680634	09h00-12h00	Bosele School for the Blind, Hlogotlou-B, Monsterlus Township
<b>IKAGENG SATELLITE</b>	MOTSWANA MF	0761654721	10h00-13h00	Ramohlokolo Secondary School, Motetema Village
<b>KEDIKETSE SATELLITE</b>	MACHAI MF	0724685496	10h00-13h00	Kediketsi Primary School, Mogaladi Village
<b>LEHLAKONG SATELLITE</b>	MAMOSHI PR	0728013854	12h00-15h00	Lehlakong Primary School, Eensaam Village
<b>MASHABELA SATELLITE</b>	MPHELA LR	0724596910/0721426703	10h00-13h00	Letsiri Primary School, Ga Phaahla Village
<b>MATIME MANOSOE SATELLITE</b>	DIALE MH	0799825798/0606201674	10h00-13h00	Old Circuit Office, Phokoane Village

<b>MOREKO SATELLITE</b>	MAHLASE MS	0760961559	09h00-12h00	Moreko CLC, next to Nebo Magistrate Court, Jane Furse
<b>MPELEGENG SATELLITE</b>	MATSOMANE KV	0843852137	14h00-17h00	Photo Primary School, Ga Moloi Village
<b>QHUBANI SATELLITE</b>	MABENA RM	0781590802	14h00-17h00	Qhubani Mahlogotlou Primary School, Monsterlus Township, Groblersdal
<b>ST RITAS SATELLITE</b>	SWAEDI SR	0749137048	09h00-12h00	Sebjaneng Primary School, Glen Cowie Village, Jane Furse
<b>THABONG SATELLITE</b>	MAHLANGU LS	0796432275	14h30-17h30	Thabong Primary School, Vierfontein, Vleischboom

For more information contact 015 753 0000/015 753 3005, 071 622 3815, WhatsApp on 064 789 6435 [Info@LP.CETC.edu.za](mailto:Info@LP.CETC.edu.za) or visit our website at [www.LimpopoCETC.gov.za](http://www.LimpopoCETC.gov.za)

Follow us on Facebook page @Limpopo Community Education and Training